

Update: 01/2023



**ACCIAIO INOX AISI 316L**  
**STAINLESS STEEL AISI 316L**  
**EDELSTAHL AISI 316L**



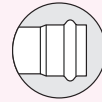
Germany



Switzerland



Norway

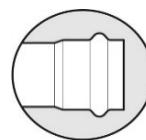


**ACCIAIO AL CARBONIO**  
**CARBON STEEL**  
**C-STAHL**

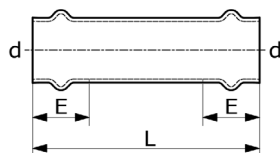


Sweden





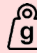

RISE



**Manicotto passante**

**Slip Coupling**

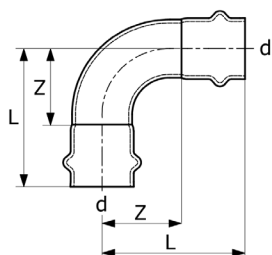
**Schiebemuffe**

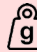

Code	d	L	E			MOQ
C11ABVI-LBP	12	64	20	32	20	200
C11ACVI-LBP	15	74	24	50	20	200
C11ADVI-LBP	18	76	25	60	20	100
C11AEVI-LBP	22	85	27	83	20	100
C11AFVI-LBP	28	90	28	108	20	100
C11AGVI-LBP	35	106	31	155	10	60
C11AHVI-LBP	42	127	35	227	6	60
C11AJVI-LBP	54	141	40	315	4	40

**Curva 90° R 1,2**

**Bend 90° R 1,2**

**Bogen 90° R 1,2**

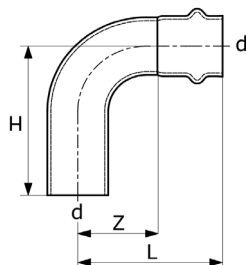


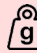

Code	d	L	Z			MOQ
C20ZBVI-LBP	12	41	23	37	20	200
C20ZCVI-LBP	15	43	22	48	20	200
C20ZDVI-LBP	18	47	26	62	20	200
C20ZEVI-LBP	22	55	32	89	20	200
C20ZFVI-LBP	28	63	39	124	10	200
C20ZGVI-LBP	35	73	46	177	10	160
C20ZHVI-LBP	42	94	62	275	6	60
C20ZJVI-LBP	54	111	74	408	6	60

**Curva 90° MF R 1,2**

**Bend 90° with plain end R 1,2**

**Einsteckbogen 90° R 1,2**



Code	d	L	H	Z			MOQ
C21ZBVI-LBP	12	41	48	23	36	20	200
C21ZCVI-LBP	15	43	53	22	49	20	200
C21ZDVI-LBP	18	47	55	26	62	20	200
C21ZEVI-LBP	22	55	65	32	89	20	200
C21ZFVI-LBP	28	63	72	39	126	10	200
C21ZGVI-LBP	35	73	81	46	178	10	100
C21ZHVI-LBP	42	94	102	62	274	6	60
C21ZJVI-LBP	54	111	120	74	411	6	60