

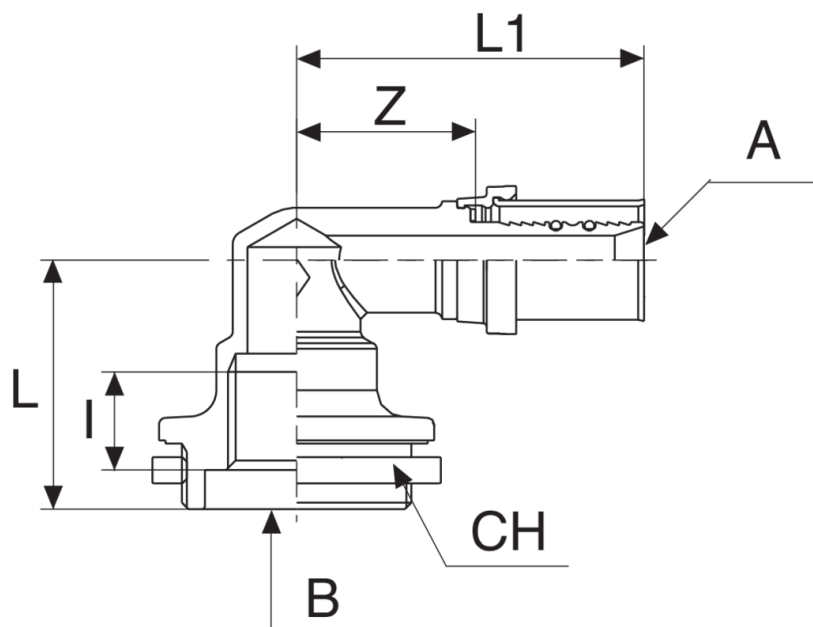
**502300**

**BREVETTATO**

Curva 90° femmina filettata femmina per cassetta WC.



## Specifiche tecniche



A X B	SP	BAG	BOX	MASTER BOX	CODICE	I	CH	L	L1	Z
16 x 1/2"	2	5	20	80	5023001604	15	44	38	53	27,5
18 x 1/2"	2	5	20	80	5023001804	15	44	38	53	27,5
20 x 1/2"	2	5	20	80	5023002004	15	44	38	53	27,5

# Applicazioni



DRINKING WATER



HEATING



HVAC



COMPRESSED AIR



INDUSTRIAL



MARINE