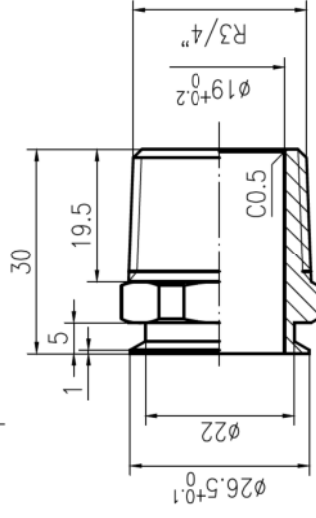
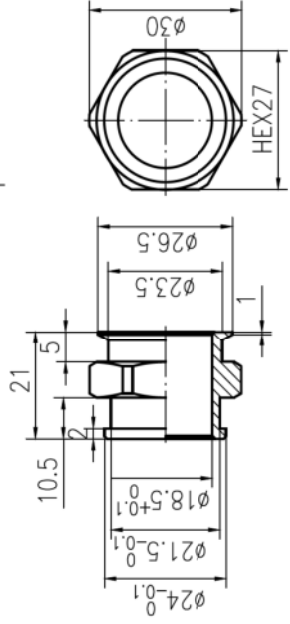
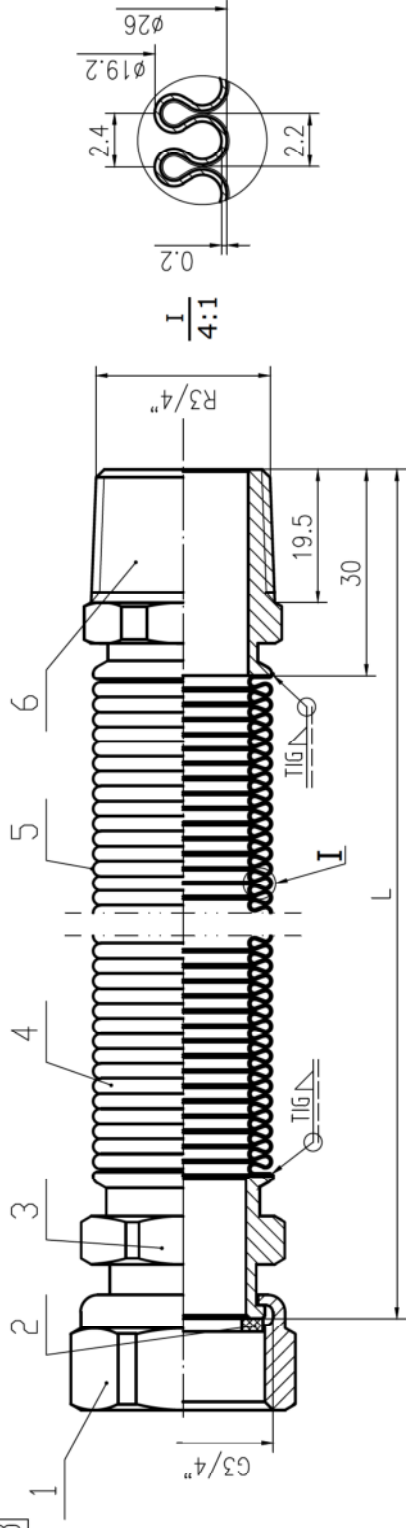


IPG-8901602-8901608



Technical requirement :

1. Annealing and compression after hose body with cover
2. weld joint to be uniform
3. No scratches or other defects on the surface of the hose
4. Wave uniformity
5. Working pressure 3Bar
6. Working temperature: Max 110°C

| 6 | TZX-201-20-1 | Male | 1 | ASTM304 | | |
|-----|---------------|------------------|------|----------|---------|---------------|
| 5 | TZX-404-14-28 | Heat shrink tube | 1 | PE | | φ28 |
| 4 | TZX-001-260-1 | Metal hose | 1 | ASTM316L | | φ26x0.2 |
| 3 | TZX-308-20-1 | Joint | 1 | ASTM304 | | |
| 2 | TZX-401-20-1 | Gaskets | 1 | NBR | | φ24.3xφ16x2.7 |
| 1 | TZX-101-20-1 | Nut | 1 | ASTM304 | | |
| No. | Code | Name | QTY. | Material | Remarks | |

| | |
|---------------------|--------|
| | |
| designed | scale |
| checked | weight |
| | 15:1 |
| approved | Sheet |
| 3/4" MF PVC COVER | |
| IPG-8901602-8901608 | |

| | | | | | | | |
|------|---------|---------|---------|---------|---------|----------|-----------|
| CODE | 8901602 | 8901603 | 8901604 | 8901605 | 8901606 | 8901607 | 8901608 |
| L | 75/91 | 110/160 | 200/320 | 260/450 | 500/900 | 700/1400 | 1000/1900 |