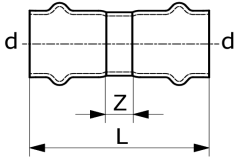



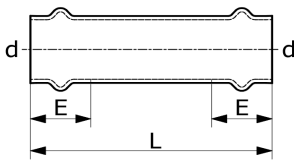
**Manicotto**  
**Coupling**  
**Muffe**




Code	d	L	Z	 g	MOQ
S10ACVI-LBP	15	54	12	39	100
S10ADVI-LBP	18	52	10	43	100
S10AEVI-LBP	22	59	13	61	100
S10AFVI-LBP	28	58	10	74	100
S10AGVI-LBP	35	72	18	110	60
S10AHVI-LBP	42	88	24	165	30
S10AJVI-LBP	54	96	22	223	30



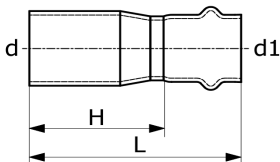
**Manicotto passante**  
**Slip Coupling**  
**Schiebemuffe**




Code	d	L	E	 g	MOQ
S11ACVI-LBP	15	74	24	51	100
S11ADVI-LBP	18	76	25	62	50
S11AEVI-LBP	22	85	27	85	50
S11AFVI-LBP	28	90	28	111	50
S11AGVI-LBP	35	106	31	160	50
S11AHVI-LBP	42	126	35	233	30
S11AJVI-LBP	54	141	40	324	20



**Manicotto di riduzione MF**  
**Reducer with plain end**  
**Reduktion**



Code	d - d1	L	H	 g	MOQ
S12DCVI-LBP	18-15	57	36	38	100
S12ECVI-LBP	22-15	62	41	46	100
S12EDVI-LBP	22-18	60	39	48	100
S12FCVI-LBP	28-15	75	54	65	80
S12FDVI-LBP	28-18	71	50	65	80
S12FEVI-LBP	28-22	67	44	68	100
S12GDVI-LBP	35-18	74	53	80	30
S12GEVI-LBP	35-22	78	55	90	80
S12GFVI-LBP	35-28	70	46	89	80
S12HEVI-LBP	42-22	92	69	118	30
S12HFVI-LBP	42-28	95	71	132	30
S12HGVI-LBP	42-35	90	63	136	30
S12JFVI-LBP	54-28	99	75	165	20
S12JGVI-LBP	54-35	105	78	188	20
S12JHVI-LBP	54-42	113	81	215	20
S12KHVI-LBP	76,1-42	152	120	475	10
S12KJVI-LBP	76,1-54	144	107	480	10
S12LJVI-LBP	88,9-54	161	124	590	10
S12MJVI-LBP	108-54	222	185	940	10