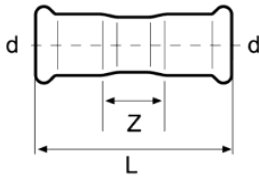

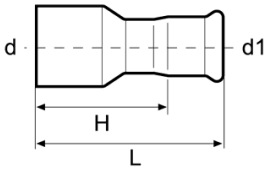



**Manicotto**  
**Coupling**  
**Muffe**



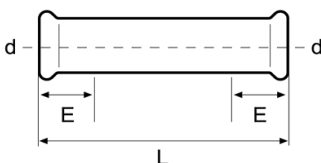
Code	d	L	Z	 g	MOQ
G10AC	15	52	10	40	100
G10AD	18	53	11	46	100
G10AE	22	59	13	62	100
G10AF	28	61	13	78	100
G10AG	35	72	18	107	60
G10AH	42	79	15	148	30
G10AJ	54	90	16	210	30
G10AK	76,1	143	33	646	5
G10AL	88,9	163	37	792	5
G10AM	108	196	42	1.263	5


**Manicotto di riduzione MF**  
**Reducer with plain end**  
**Reduktion**



Code	d-d1	L	H	 g	MOQ
G12DC	18-15	56	35	41	100
G12EC	22-15	61	40	46	100
G12ED	22-18	59	38	49	100
G12FC	28-15	74	53	65	80
G12FD	28-18	77	56	70	80
G12FE	28-22	66	43	68	100
G12GE	35-22	78	55	90	80
G12GF	35-28	68	44	88	80
G12HF	42-28	99	75	138	30
G12HG	42-35	79	52	123	30
G12JF	54-28	102	78	170	20
G12JG	54-35	117	90	207	20
G12JH	54-42	94	62	185	20
G12KH	76,1-42	154	122	466	5
G12KJ	76,1-54	142	106	469	5
G12LJ	88,9-54	157	121	581	5
G12LK	88,9-76,1	158	103	705	5
G12MJ	108-54	206	169	874	5
G12MK	108-76,1	199	144	989	5
G12ML	108-88,9	196	133	1.038	5

**Manicotto passante**  
**Slip Coupling**  
**Schiebemuffe**



Code	d	L	E	 g	MOQ
G11AC	15	73	24	56	100
G11AD	18	77	25	63	50
G11AE	22	83	27	84	50
G11AF	28	92	28	114	50
G11AG	35	101	31	153	50
G11AH	42	118	35	218	30
G11AJ	54	142	40	327	20