

**Flangia con bicchiere PN 10/16**

**Flange with pressing socket PN 10/16**

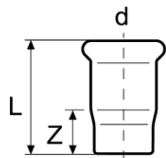
**Übergangsflansch PN 10/16**

Code	d	D	di	L	H	m	k	Z		MOQ
S52AC-LBP	15	95	14	53	11	14	65	32	591	20
S52AD-LBP	18	95	17	57	11	14	65	36	591	20
S52AE-LBP	22	105	21	60	12	14	75	37	792	20
S52AF-LBP	28	115	27	65	14	14	85	41	1.101	20
S52AG-LBP	35	140	32	70	15	18	100	43	1.724	20
S52AH-LBP	42	150	39	77	16	18	110	45	2.105	15
S52AJ-LBP	54	165	51	87	18	18	125	50	2.818	15
S52AK	76,1	185	72	128	18	18	145	73	3.636	5
S52AL	88,9	200	85	145	20	18	160	82	4.453	5
S52AM	108	220	104	169	20	18	180	92	5.346	5

I diametri 88,9 e 108 hanno 8 fori

Diameters 88,9 and 108 are with 8 holes

Durchmesser 88,9 und 108 mit 8 Befestigungslöcher



**Tappo femmina**

**Cap**

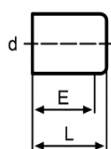
**Kappe**

Code	d	L	Z		MOQ
S50AC-LBP	15	37	16	28	100
S50AD-LBP	18	39	18	33	50
S50AE-LBP	22	42	19	45	50
S50AF-LBP	28	46	22	63	50
S50AG-LBP	35	51	24	78	50
S50AH-LBP	42	59	27	119	20
S50AJ-LBP	54	72	35	183	20
S50AK	76,1	95	40	441	5
S50AL	88,9	107	44	544	5
S50AM	108	129	52	862	5

**Tappo maschio**

**Plug**

**Stopfen**



Code	d	E	L		MOQ
S51AC	15	33	42	16	100
S51AD	18	33	40	18	50
S51AE	22	34	43	30	50
S51AF	28	36	47	42	50
S51AG	35	40	49	70	50
S51AH	42	44	55	96	20
S51AJ	54	49	62	144	20
S51AK	76,1	65	75	328	5
S51AL	88,9	72	90	480	5
S51AM	108	87	103	648	5