
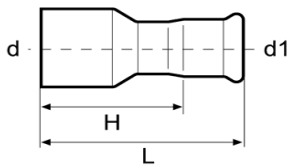



Manicotto
Coupling
Muffe

Code	d	L	Z		MOQ
S10AB-LBP	12	42	6	24	100
S10AC-LBP	15	52	10	40	100
S10AD-LBP	18	53	11	46	100
S10AE-LBP	22	59	13	62	100
S10AF-LBP	28	61	13	78	100
S10AG-LBP	35	72	18	107	60
S10AH-LBP	42	79	15	148	30
S10AJ-LBP	54	90	16	210	30
S10AK	76,1	143	33	646	5
S10AL	88,9	163	37	792	5
S10AM	108	196	42	1.263	5



Manicotto di riduzione MF
Reducer with plain end
Reduktion

Code	d-d1	L	H		MOQ
S12CB-LBP	15-12	53	35	30	100
S12DB-LBP	18-12	60	42	37	100
S12DC-LBP	18-15	56	35	41	100
S12EB-LBP	22-12	60	42	42	100
S12EC-LBP	22-15	61	40	46	100
S12ED-LBP	22-18	59	38	49	100
S12FC-LBP	28-15	74	53	65	80
S12FD-LBP	28-18	77	56	70	80
S12FE-LBP	28-22	66	43	68	100
S12GC-LBP	35-15	83	62	86	30
S12GD-LBP	35-18	86	65	90	30
S12GE-LBP	35-22	78	55	90	80
S12GF-LBP	35-28	68	44	88	80
S12HC-LBP	42-15	97	76	114	20
S12HD-LBP	42-18	100	79	119	20
S12HE-LBP	42-22	92	69	120	30
S12HF-LBP	42-28	99	75	138	30
S12HG-LBP	42-35	79	52	123	30
S12JC-LBP	54-15	108	87	160	15
S12JD-LBP	54-18	111	90	165	15
S12JE-LBP	54-22	110	87	169	15
S12JF-LBP	54-28	102	78	170	20
S12JG-LBP	54-35	117	90	207	20
S12JH-LBP	54-42	94	62	185	20
S12KH-LBP	76,1-42	154	122	466	5
S12KJ-LBP	76,1-54	142	106	469	5
S12LJ-LBP	88,9-54	157	121	581	5
S12LK	88,9-76,1	158	103	705	5
S12MJ-LBP	108-54	206	169	874	5
S12MK	108-76,1	199	144	989	5
S12ML	108-88,9	196	133	1.038	5