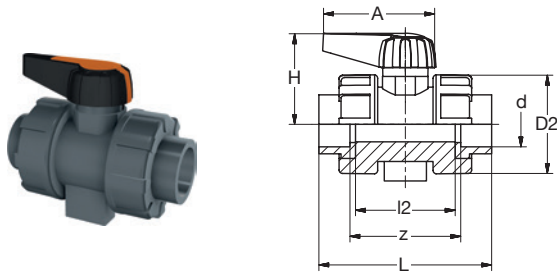
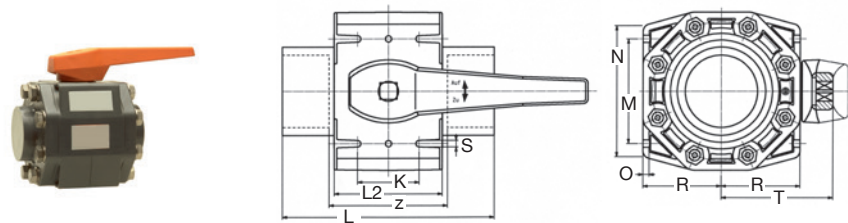


1.02.08 Kugelhähne • Ball valves



BR PVC-U Kugelhahn verschraubt Runddichtung-EPDM/**FKM** grau
 BR PVC-U Ball valve with Union-nuts O-Ring-gasket-EPDM/**FKM** grey

| Art Nr Art No | d [mm] | DN | D2 | L | l2 | A | H | z | PN [bar] | KG | VE1 PU1 |
|------------------|-----------|----|-----|-----|-----|-----|-----|-----|-------------|------|------------|
| EPDM | | | | | | | | | | | |
| 1910 06R1 22 | 20 | 15 | 50 | 95 | 56 | 66 | 48 | 63 | 16 | 0,16 | 1 |
| 1910 07R1 22 | 25 | 20 | 59 | 110 | 65 | 80 | 57 | 72 | 16 | 0,24 | 1 |
| 1910 08R1 22 | 32 | 25 | 70 | 123 | 71 | 80 | 65 | 79 | 16 | 0,37 | 1 |
| 1910 09R1 22 | 40 | 32 | 86 | 146 | 85 | 95 | 83 | 94 | 16 | 0,68 | 1 |
| 1910 10R1 22 | 50 | 40 | 100 | 158 | 89 | 95 | 89 | 96 | 16 | 0,91 | 1 |
| 1910 11R1 22 | 63 | 50 | 126 | 184 | 101 | 141 | 115 | 108 | 16 | 1,66 | 1 |
| FKM (FPM) | | | | | | | | | | | |
| 1910 06R3 22 | 20 | 15 | 50 | 95 | 56 | 66 | 48 | 63 | 16 | 0,16 | 1 |
| 1910 07R3 22 | 25 | 20 | 59 | 110 | 65 | 80 | 57 | 72 | 16 | 0,24 | 1 |
| 1910 08R3 22 | 32 | 25 | 70 | 123 | 71 | 80 | 65 | 79 | 16 | 0,37 | 1 |
| 1910 09R3 22 | 40 | 32 | 86 | 146 | 85 | 95 | 83 | 94 | 16 | 0,68 | 1 |
| 1910 10R3 22 | 50 | 40 | 100 | 158 | 89 | 95 | 89 | 96 | 16 | 0,91 | 1 |
| 1910 11R3 22 | 63 | 50 | 126 | 184 | 101 | 141 | 115 | 108 | 16 | 1,66 | 1 |



BR PVC-U Kugelhahn Muffenflansch Dichtung-EPDM/**FKM** grau
 BR PVC-U Ball valve socket-flange gasket-EPDM/**FKM** grey

| Art Nr Art No | d [mm] | DN | K | L | L2 | M | N | O | R | S | T | z | PN [bar] | KG | VE1 PU1 |
|------------------|-----------|-----|----|-----|-----|-----|-----|-----|-------|-----|-----|-----|-------------|------|------------|
| EPDM | | | | | | | | | | | | | | | |
| 191M 12R1 32 | 75 | 65 | 60 | 206 | 112 | 110 | 130 | 5,5 | 84,0 | 8,5 | 127 | 118 | 10 | 6,66 | 1 |
| 191M 13R1 32 | 90 | 80 | 60 | 236 | 124 | 124 | 140 | 6,0 | 92,5 | 8,5 | 135 | 134 | 10 | 7,80 | 1 |
| 191M 14R1 32 | 110 | 100 | 80 | 276 | 144 | 136 | 160 | 8,0 | 102,5 | 8,5 | 148 | 154 | 10 | 9,97 | 1 |
| FKM (FPM) | | | | | | | | | | | | | | | |
| 191M 12R3 32 | 75 | 65 | 60 | 206 | 112 | 110 | 130 | 5,5 | 84,0 | 8,5 | 127 | 118 | 10 | 6,66 | 1 |
| 191M 13R3 32 | 90 | 80 | 60 | 236 | 124 | 124 | 140 | 6,0 | 92,5 | 8,5 | 135 | 134 | 10 | 7,80 | 1 |
| 191M 14R3 32 | 110 | 100 | 80 | 276 | 144 | 136 | 160 | 8,0 | 102,5 | 8,5 | 148 | 154 | 10 | 9,97 | 1 |

