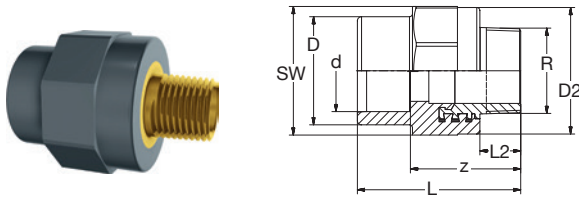


1.02.04 Übergänge • Transitions



BR PVC-U-**Messing/LFB** Übergang **AG-keg** grau

BR PVC-U-**Brass/LFB** Transition **male-thread-con** grey

Art Nr	d x R	DN	D	D2	L	L2	z	SW	PN	KG	VE1	VE2
Art No	[mm x Inch]	[mm]										

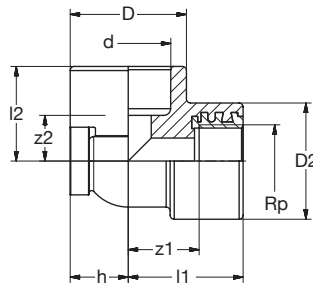
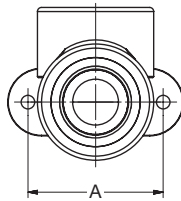
MS • Brass

1M10067312	20 x 1/2	15	29	35	55	13	39	36	16	0,10	10	90
1M10077512	25 x 3/4	20	34	43	58	14	39	44	16	0,14	10	50
1M10087612	32 x 1	25	43	50	70	16	48	51	16	0,23	10	40

LFB

1L10 0673 12	20 x 1/2 *	15	29	35	55	13	39	36	16	0,10	10	90
1L10 0775 12	25 x 3/4 *	20	34	43	58	14	39	44	16	0,14	10	50
1L10 0876 12	32 x 1 *	25	43	50	70	16	48	51	16	0,23	10	40
1L10 0977 12	40 x 1 1/4	32	52	62	79	20	53	63	16	0,36	2	24
1L10 1078 12	50 x 1 1/2	40	64	69	85	20	54	70	16	0,42	2	16
1L10 1180 12	63 x 2	50	79	84	103	23	65	85	16	0,73	2	12

* Auf Anfrage • On request



BR PVC-U-**Rotguss/Messing/LFB** Ü-Winkel 90° **IG-zyl** Wandbefestigung grau

BR PVC-U-**Bronze/Brass/LFB** Transition-Elbow 90° **female-thread-cyl** wall-mount grey

Art Nr	d x Rp	DN	D	D2	L1	L2	h	A*	z1	z2	PN	KG	VE1	VE2
Art No	[mm x Inch]	[mm]												

RG • Bronze

1R30 0745 12	25 x 3/4	20	43	43	43	35	22	50	28	19	16	0,18	A	-
--------------	----------	----	----	----	----	----	----	----	----	----	----	------	---	---

MS • Brass

1L30064312	20 x 1/2	15	29	35	35	27	15	40	21	11	16	0,12	1	50
1L30074512	25 x 3/4	20	43	43	43	35	22	50	28	19	16	0,18	1	30

LFB

1L30 0643 12	20 x 1/2 **	15	29	35	35	27	15	40	21	11	16	0,12	1	50
1L30 0745 12	25 x 3/4 **	20	43	43	43	35	22	50	28	19	16	0,18	1	30

** Auf Anfrage • On request

* Abstand der Befestigungslöcher.
Distance of mounting holes.