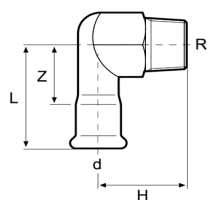
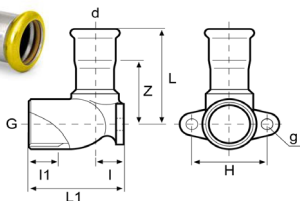


Winkel A.G.



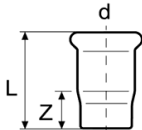
Art. Nr.	d - R	L	H	Z	Gewicht in g	Mind. Menge
G31PC	15-R $\frac{1}{2}$	53	36	32	90	80
G31PD	18-R $\frac{1}{2}$	51	36	30	103	50
G31QE	22-R $\frac{3}{4}$	58	40	35	145	50
G31RF	28-R1	63	44	39	248	50
G31SG	35-R1 $\frac{1}{4}$	71	48	44	354	30

Deckenwinkel I.G.



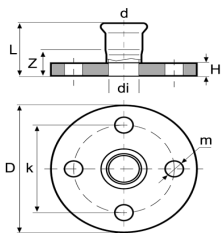
Art. Nr.	d - G (ISO 228)	L	L1	Z	I	I1	H	g	Gewicht in g	Mind. Menge
G32PC	15-G $\frac{1}{2}$	46	43	25	12	12	34	5	104	80
G32PD	18-G $\frac{1}{2}$	47	44	26	13	12	34	6	100	60
G32QE	22-G $\frac{3}{4}$	52	51	29	16	13	40	6	147	60

Kappe



Art. Nr.	d	L	Z	Gewicht in g	Mind. Menge
G50AC	15	37	16	28	100
G50AD	18	40	19	34	50
G50AE	22	41	18	45	50
G50AF	28	46	22	62	50
G50AG	35	51	24	78	50
G50AH	42	59	27	116	20
G50AJ	54	72	35	176	20

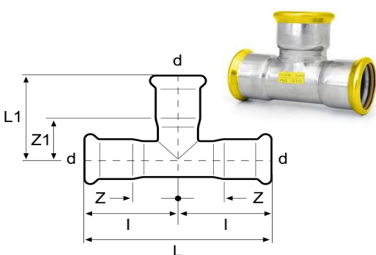
Übergangsflansch PN 16



Art. Nr.	d	D	di	L	H	m	k	Z	Gewicht in g	Mind. Menge
G52AE	22	105	21	59	12	14	75	39	792	20
G52AF	28	115	27	65	14	14	85	47	1.122	20
G52AG	35	140	32	70	15	18	100	52	1.770	20
G52AH	42	150	39	77	16	18	110	59	2.090	15
G52AJ	54	165	51	86	18	18	125	75	2.838	15
G52AK	76,1	185	72	126	18	18	145	71	3.637	5
G52AL	88,9	200	85	147	20	18	160	84	4.405	5
G52AM	108	220	104	167	20	18	180	90	5.360	5

Durchmesser 88,9 und 108 (PN 10/16) mit 8 Befestigungslöcher

T-Stück



Art. Nr.	d	L	L1	Z	Z1	I	Gewicht in g	Mind. Menge
G40AC	15	74	35	16	14	37	71	100
G40AD	18	80	35	19	14	40	84	100
G40AE	22	82	40	18	17	41	110	100
G40AF	28	92	45	22	21	46	146	80
G40AG	35	102	55	24	28	51	193	50
G40AH	42	118	61	27	29	59	278	20
G40AJ	54	142	72	34	35	71	406	20
G40AK	76,1	232	115	61	60	116	1.170	5
G40AL	88,9	262	127	68	64	131	1.556	5
G40AM	108	312	155	79	78	156	2.276	5