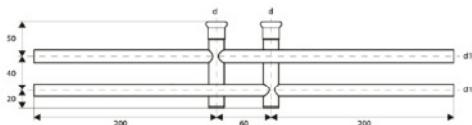


ACCIAIO AL CARBONIO

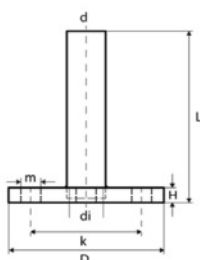
CARBON STEEL

C-STAHL



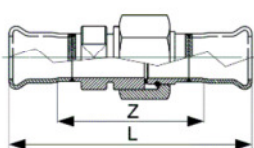
Scavalco doppio lungo
Long double crossing
Lange Überbogen

Codice	d - d1
C92BB-LBP	12-12
C92BC-LBP	15-12
C92CC-LBP	15-15
C92CE-LBP	22-15



Codolo flangiato PN16
Flange with plain end
Flansch PN 16 mit Einsteckende

Codice	d	D	di	L	H	m	k
C56AE	22	105	21	140	12	14	75
C56AF	28	115	27	140	14	14	85
C56AG	35	140	32	160	15	18	100
C56AH	42	150	39,0	160	16	18	110
C56AJ	54	165	51	160	18	18	125
C56AK	76,1	185	72	110	18	18	145
C56AL	88,9	200	85	143	20	18	160
C56AM	108	220	104	168	20	18	180
C57AE	22	90	21	61	14	11	65
C57AF	28	100	27	65	14	11	75
C57AG	35	120	32	70	16	14	90
C57AH	42	130	39	77	16	14	100
C57AJ	54	140	54	96	16	14	110
C57AK	76,1	160	72	130	14	14	130
C57AL	88,9	190	85	137	16	18	150
C57AM	108	210	104	162	16	18	170



Doppio raccordo con dado in ottone e guarnizione piatta in EPDM
Double fitting with brass nut and EPDM flat gasket
Doppelanschluss-Verschraubung mit EPDM Flachdichtung und Messingmutter

Codice	d - R	L	H
C66QC-LBP	G $\frac{3}{4}$ -15	99	57
C66QD-LBP	G $\frac{3}{4}$ -18	86	44
C66RE-LBP	G1-22	94	48
C66SF-LBP	G1 $\frac{1}{4}$ -28	100	52
C66TG-LBP	G1 $\frac{1}{2}$ -35	110	57
C66UH-LBP	G1 $\frac{3}{4}$ -42	119	55
C66WJ-LBP	G2 $\frac{1}{8}$ -54	128	54